

# Room Plans

## Dining Room

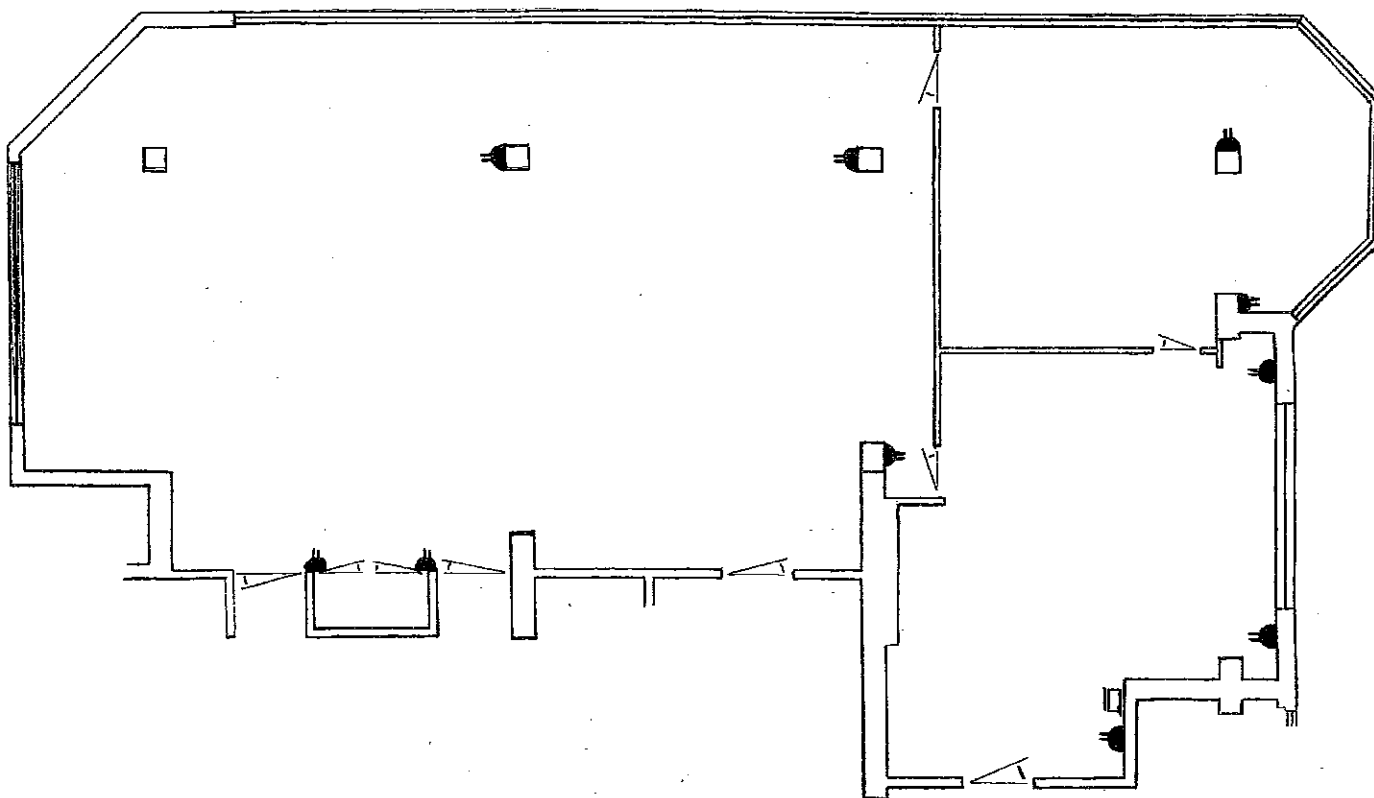
Located on the first floor with wonderful river views the Dining Room can be used on its own or in conjunction with the Members' Balcony. Ideal for larger conferences and seminars

Lunch or Dinner 80 - 100  
Theatre 80  
U-shape 35  
Boardroom 30  
Dimensions: 13.5m x 8m

## Members Balcony

Located on the first floor with sweeping views of the river, the Members' Balcony is ideal for smaller meetings and conferences

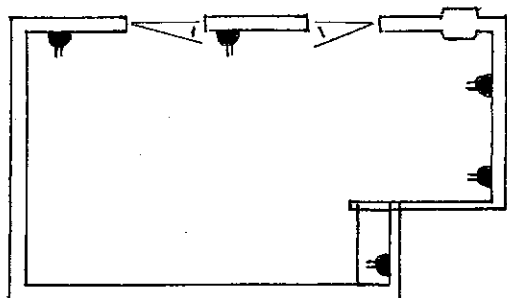
Lunch or Dinner 30  
Theatre 40  
Reception 40  
Boardroom 50  
Dimensions: 11.5m x 6m



## Eton Room

Located on the second floor the Eton Room has panoramic views of the river and offers a retreat-style executive boardroom

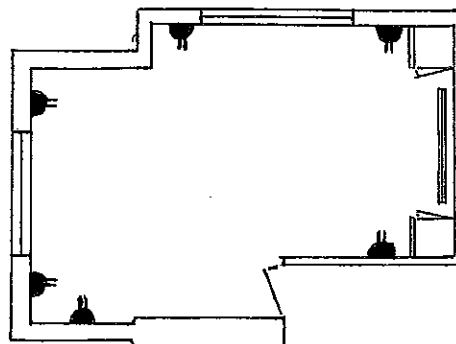
Boardroom 16  
Dimensions: 8.4m x 5.8m



## Library

Located on the second floor the Library is ideal for more intimate meetings and drinks receptions or may be used as a break-out room

Boardroom 8  
Dimensions: 8.6m x 5m



WiFi access is available in all meeting rooms, and complimentary parking is available for all delegates.